

Light efficiency:

75 Lumen/Watt

Light quality:

CRI: 81.0

Color temperature:

3071 K

Output: 3056 lm

Peak: 4697 cd

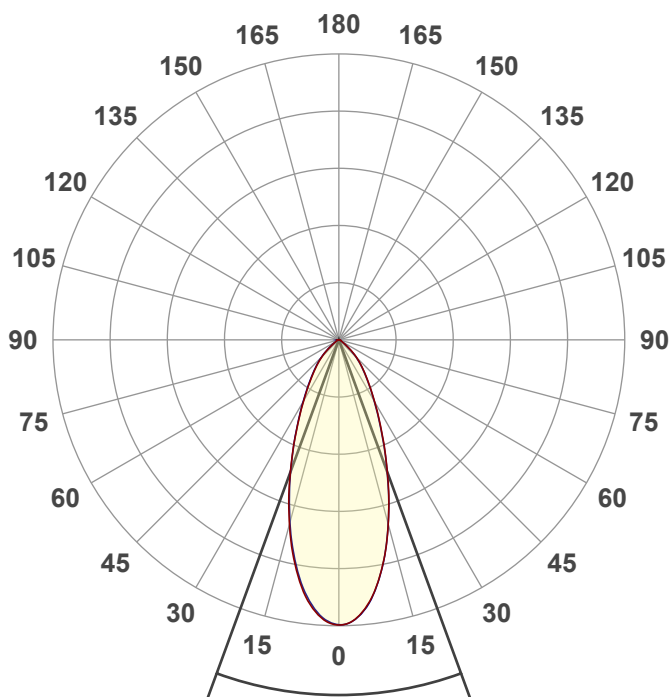
Power: 40.7 W

PF: 0.98



NU3-RD-SW-40LM-30K-80-20D-DL-WH-WH

Date and time:
11/9/2020 1:40:25 PM



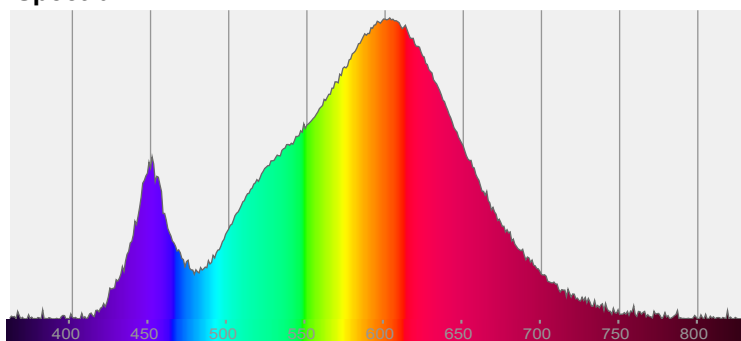
Beam angle

40.2°

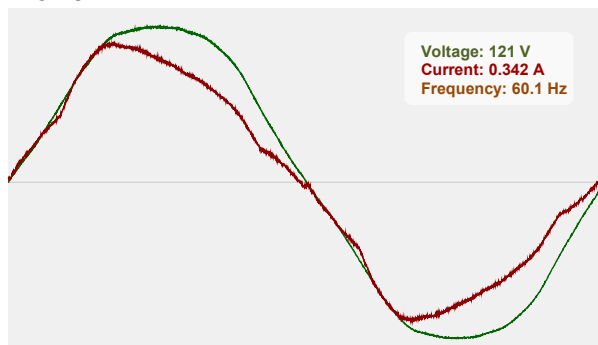


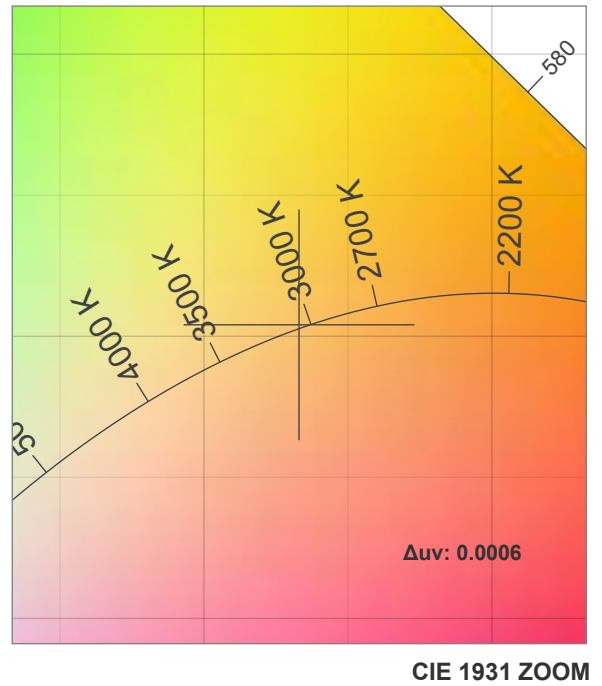
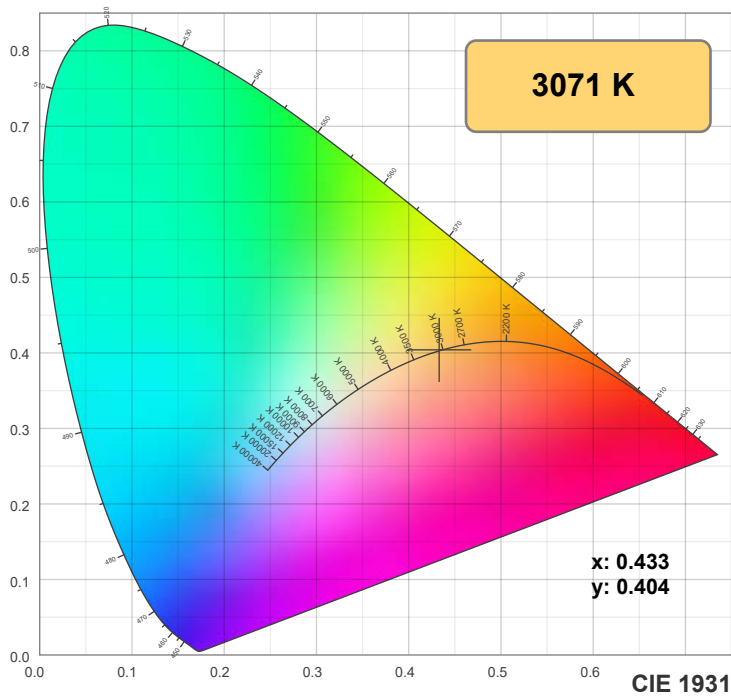
CIE 1931
x: 0.433
y: 0.404

Spectra

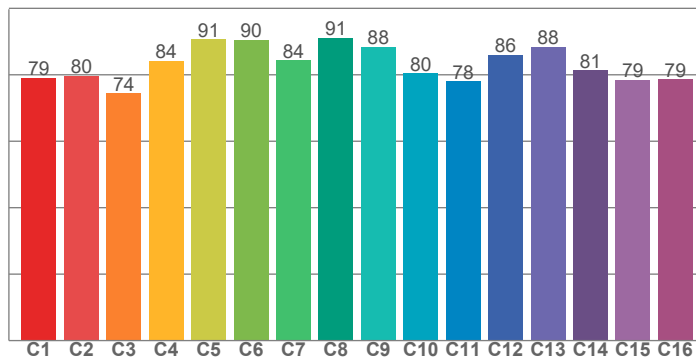


Power

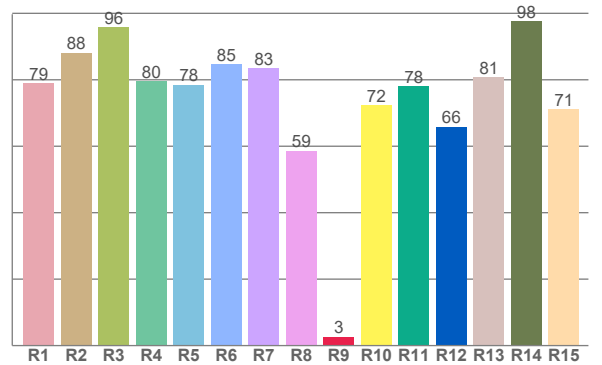




TM30: 83.1



CRI: 81.0 (R1-R8)



CRI R values, only R1-R8 are used to calculate final CRI value

R1	R2	R3	R4	R5	R6	R7	R8	R9	R10	R11	R12	R13	R14	R15
78.9	88.1	95.8	79.6	78.5	84.6	83.5	58.6	2.6	72.4	78.0	65.9	80.8	97.6	71.1

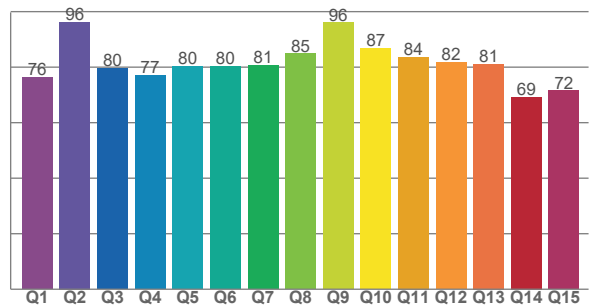
TM30 C values, 16 binned values out of total of 99 C values

C1	C2	C3	C4	C5	C6	C7	C8	C9	C10	C11	C12	C13	C14	C15	C16
79.1	79.6	74.5	84.2	90.6	90.4	84.3	91.1	88.4	80.5	78.0	86.1	88.4	81.3	78.5	78.6

CQS Q values

Q1	Q2	Q3	Q4	Q5	Q6	Q7	Q8	Q9	Q10	Q11	Q12	Q13	Q14	Q15
76.4	96.2	79.6	77.1	80.3	80.3	80.7	84.8	96.1	86.8	83.7	81.8	81.1	69.3	71.6

CQS: 80.2



Color parameters

Color temperature	Color rendering index	Red component	Color fidelity	Color gamut	Color quality scale	Color coordinate cie 1931	Color coordinate cie 1931	Color coordinate	Color coordinate	Color deviation from black body
CCT	CRI	CRI R9	TM30 Rf	TM30 Rg	CQS	x	y	u	v	Δuv
3071 K	81.0	2.6	83.1	96.9	80.2	0.433	0.404	0.248	0.347	0.0006

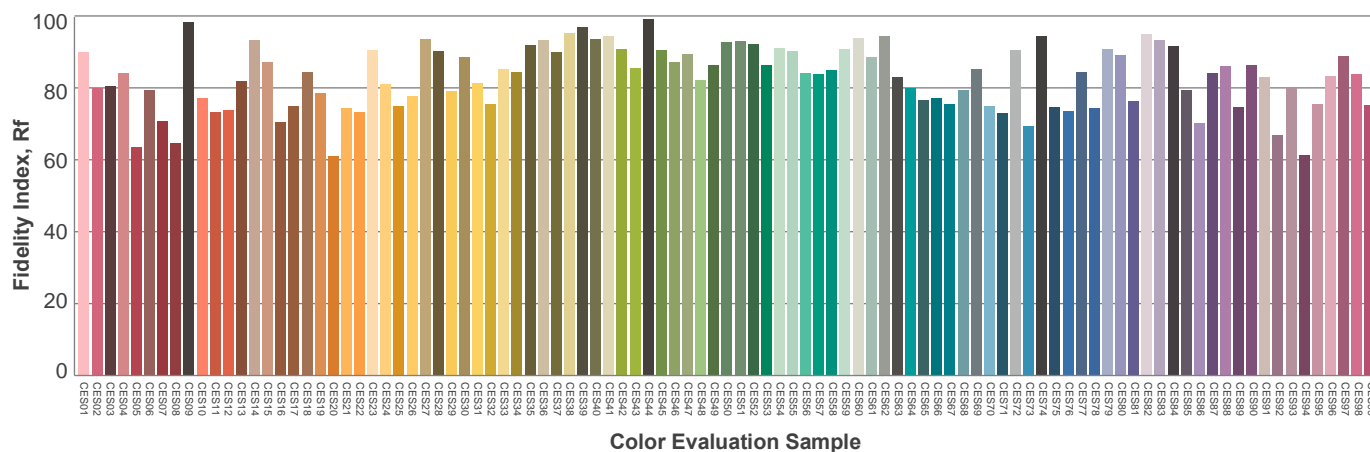
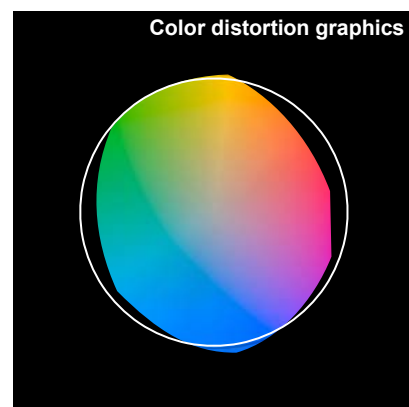
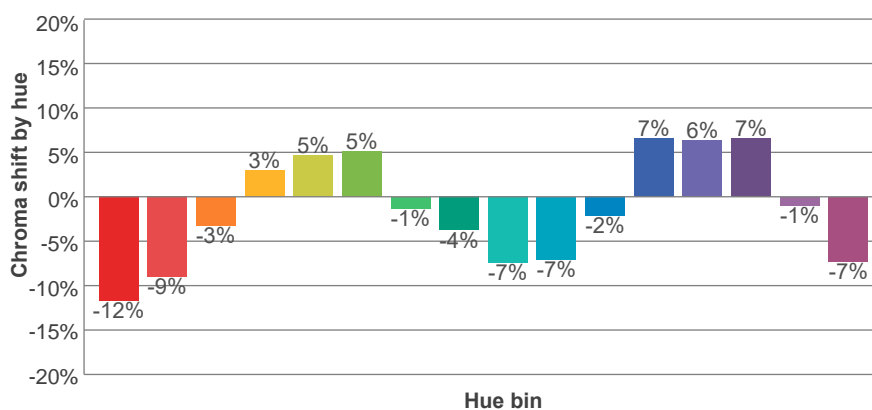
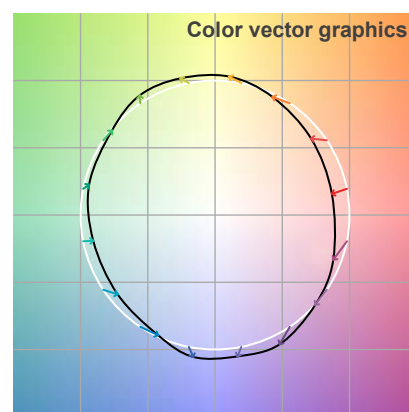
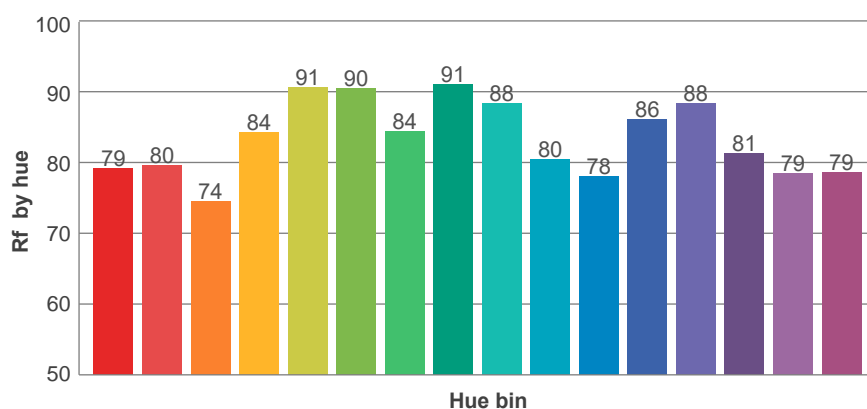
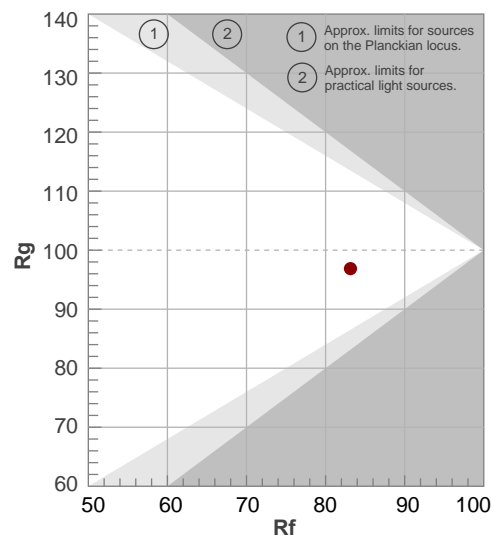
Rf 83.1

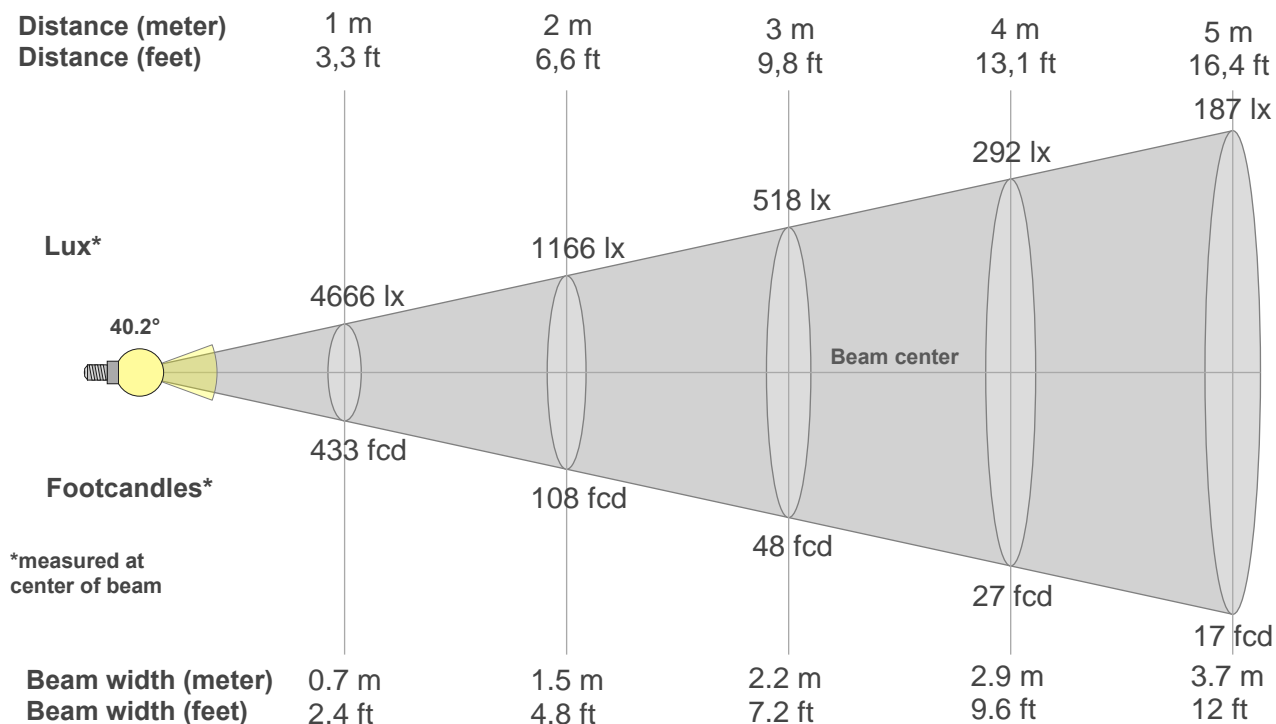
Fidelity index Rf

Rg 96.9

Gamut index Rg

Hue Bin	R _f	Graphic shifts (%)	
		Chroma	Hue
1	79	-12%	-2%
2	80	-9%	8%
3	74	-3%	13%
4	84	3%	10%
5	91	5%	5%
6	90	5%	-3%
7	84	-1%	-10%
8	91	-4%	-4%
9	88	-7%	1%
10	80	-7%	9%
11	78	-2%	14%
12	86	7%	5%
13	88	6%	-4%
14	81	7%	-13%
15	79	-1%	-14%
16	79	-7%	-15%





Beam intensities from 1-20m

1m	2m	3m	4m	5m	6m	7m	8m	9m	10m	11m	12m	13m	14m	15m	16m	17m	18m	19m	20m
3.3ft	6.6ft	9.8ft	13.1ft	16.4ft	19.7ft	23ft	26.2ft	29.5ft	32.8ft	36.1ft	39.4ft	42.7ft	45.9ft	49.2ft	52.5ft	55.8ft	59.1ft	62.3ft	65.6ft
4666lx	1166lx	518lx	292lx	187lx	130lx	95lx	73lx	58lx	47lx	39lx	32lx	28lx	24lx	21lx	18lx	16lx	14lx	13lx	12lx
433.5fcd	108.4fcd	48.2fcd	27.1fcd	17.3fcd	12fcd	8.8fcd	6.8fcd	5.4fcd	4.3fcd	3.6fcd	3fcd	2.6fcd	2.2fcd	1.9fcd	1.7fcd	1.5fcd	1.3fcd	1.2fcd	1.1fcd

Intensities in 0° c-plane

0°	2°	4°	6°	8°	10°	12°	14°	16°	18°	20°	22°	24°	26°	28°	30°	32°	34°	36°	38°
4666	4668	4547	4390	4195	3918	3640	3320	2991	2672	2367	2062	1819	1579	1373	1202	1033	915	797	698
100%	100%	97%	94%	90%	84%	78%	71%	64%	57%	51%	44%	39%	34%	29%	26%	22%	20%	17%	15%

Intensities in 90° c-plane

0°	2°	4°	6°	8°	10°	12°	14°	16°	18°	20°	22°	24°	26°	28°	30°	32°	34°	36°	38°
4666	4670	4544	4418	4188	3923	3640	3314	2987	2668	2351	2057	1802	1547	1360	1180	1025	900	775	685
100%	100%	97%	95%	90%	84%	78%	71%	64%	57%	50%	44%	39%	33%	29%	25%	22%	19%	17%	15%

Intensities in 180° c-plane

0°	2°	4°	6°	8°	10°	12°	14°	16°	18°	20°	22°	24°	26°	28°	30°	32°	34°	36°	38°
4666	4663	4543	4387	4193	3914	3635	3318	2995	2677	2368	2059	1809	1564	1354	1182	1011	892	774	674
100%	100%	97%	94%	90%	84%	78%	71%	64%	57%	51%	44%	39%	34%	29%	25%	22%	19%	17%	14%

Intensities in 270° c-plane

0°	2°	4°	6°	8°	10°	12°	14°	16°	18°	20°	22°	24°	26°	28°	30°	32°	34°	36°	38°
4666	4626	4537	4349	4160	3882	3590	3287	2965	2643	2351	2061	1803	1580	1359	1199	1039	907	796	689
100%	99%	97%	93%	89%	83%	77%	70%	64%	57%	50%	44%	39%	34%	29%	26%	22%	19%	17%	15%

Beam angle 50%	Field angle 10%	Cutoff angle 2,5%	Intensity ratio in 120° cone	Intensity ratio in 90° cone
40.2°	86.7°	109.3°	98.0%	90.5%